

# COVID-19 Business Impacts Survey

**937** Respondents  
through April 1, 2020

## ORGANIZATION TYPE

Independent worker (contractor, freelance, gig worker, no employees)	328	35%
Privately held business w/ employees	470	51%
Franchised business operation	47	5%
Publicly traded corporation	5	1%
Not-for-profit organization	74	8%
<b>Total</b>	<b>924</b>	<b>100%</b>

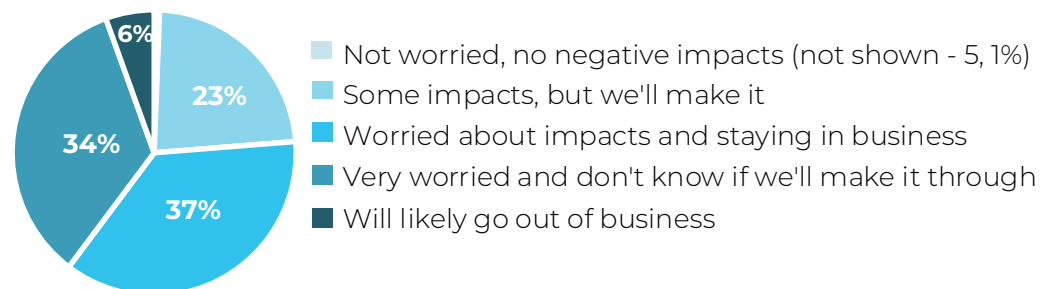
**744**  
Single-Location Businesses

**105**  
Two to Four Locations

**25**  
Five or more

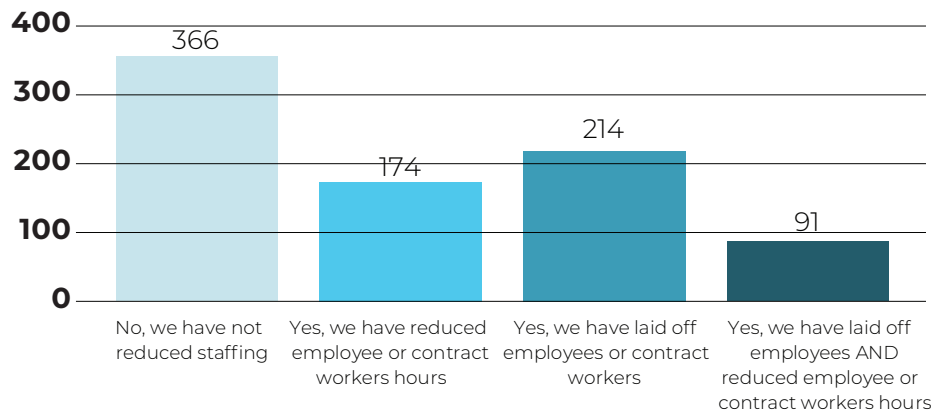
## BUSINESS OWNER OUTLOOK

"How worried are you about your business?"



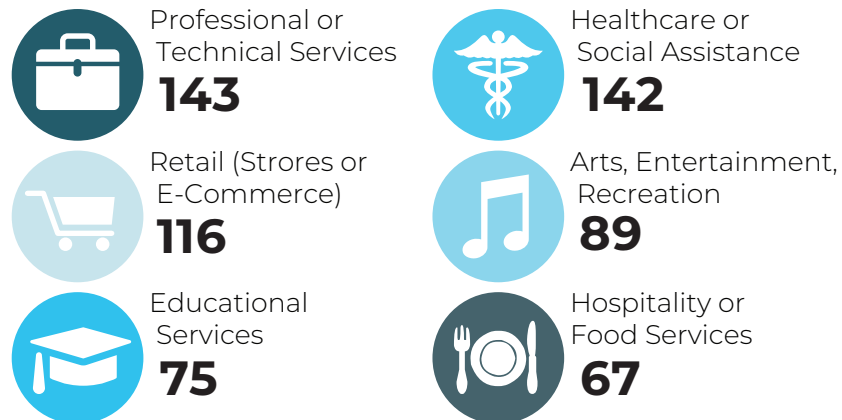
## CURRENT LAYOFFS

"Have you reduced your staff capacity?"



## RESPONDENTS BY INDUSTRY

Top Six Industries



## RENTS & LEASES

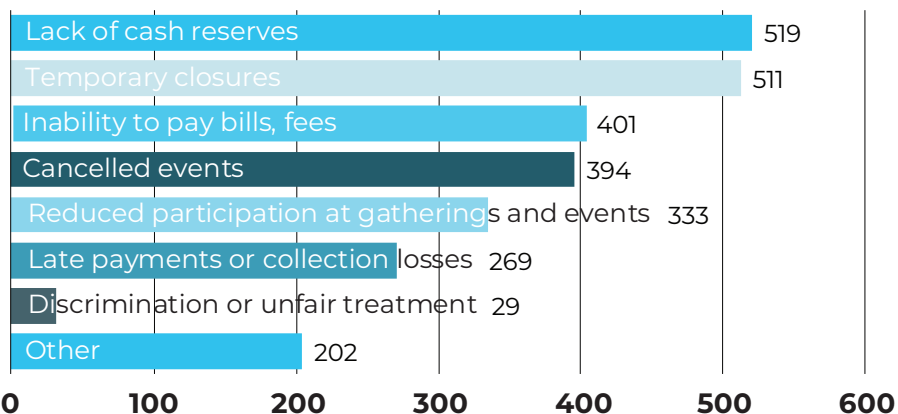
**38%**

of businesses express concerns about paying rent

**32%**

say they are unable to

## BUSINESS CONCERNS



**Note:** Survey led by Seattle Office of Economic Development, with support from Greater Seattle Partners and Seattle Metropolitan Chamber of Commerce. The survey responses are not a representative sample of all local businesses, and the survey was not designed to serve that goal. Survey respondents are apt to present a selection bias toward business more negatively affected.